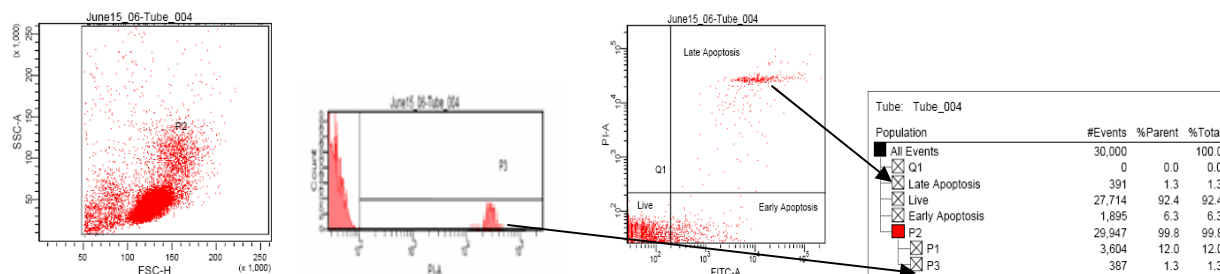


FACSCanto Instructions

1. In order to schedule an appointment for the flow cytometer you must have a scheduling account for our scheduling page. You can get one from the lab technician. Go to our website located at mmbio.byu.edu/faculty/sb626/protein/ under the scheduling tab.
2. In order to successfully run and analyze your samples you must provide correct control specimens. The necessary controls are as follows:
 - A. A negative control composed of either your cells without stain, or a negative population of your cells with stain. It is preferable to have both types of controls when setting up a new experiment.
 - B. A single positive control for each color. These controls must only contain one stain per control.
3. These are pictures of the type of data you may obtain as well as a description of each type of graph.



The first graph shows the forward and side scatter of the cells. This is a morphological characteristic used to remove debris and only analyze a certain population of cells. The x-axis represents cell size and the y-axis represents cell granularity.

This second graph shows a histogram of a certain color which is being analyzed. It shows how many cells are at each intensity of fluorescence for that color.

This third graph shows a scatter plot of two different colors being analyzed at the same time. It will show which cells are staining for one or both of each color.

This box shows the percentages and numbers for each category. You can see that the PI histogram has the same percentage as late apoptosis.